



Kansas City

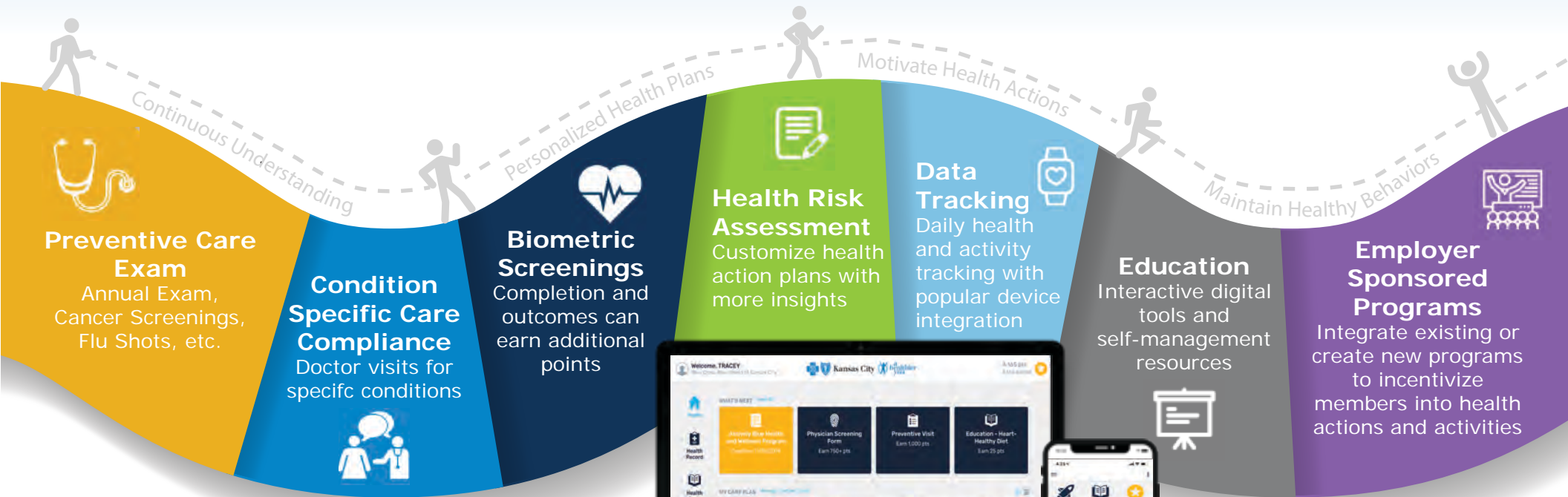


Learn more about our expanded solutions to offer the best in healthcare engagement



# Offer Your Employees a Comprehensive Health Engagement Solution

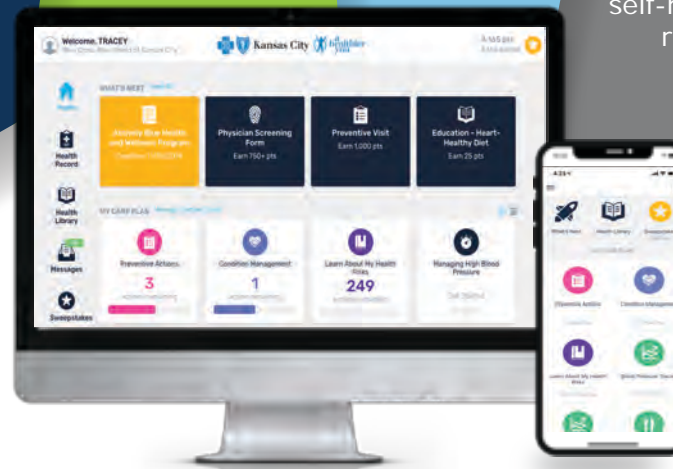
**A Healthier You** is Blue KC's health and wellness program focused on achieving outcomes by improving the health of our members. Our engaging solution offers helpful tools and resources, as well as a personalized empowerment portal and mobile experience - uniquely designed to learn more about each individual and provide the appropriate support, incentives, and interventions for their health journey. This simple and comprehensive core program can be made accessible to your entire employee population, from wellness to condition management.



# 20%

More identified risks from self-reported data in the AHY digital experience

Dynamic Digital Experience (web, mobile)



Claims data is automatically collected and provides insight into employees' next health action

**83%** Registered members in AHY have completed the Health Risk Assessment (HRA)

**85%** AHY-registered members have completed a Biometric Screening

There are a number of ways to further personalize your wellness experience with Blue KC. Our team will review these options with you, and compile a program to meet your employees' health needs.\*

## Help Your Employees Get Healthier and More Productive

“ This is an awesome program and helps you have accountability and stay on track with a healthier lifestyle. ”

### Gift Card Programs

provide a strong member incentive to complete health actions, earn points and potentially win digital gift cards to your employees' favorite retailers.

“ A Healthier You gives you a wealth of information about everything. I didn't expect it but I love it. ”

**Online Challenges** allow for additional promotion of healthy, lasting habits, better mind-body health and increased work satisfaction.

**Onsite Biometric Screenings** assist with identifying modifiable health risks, improve health awareness and improve workplace productivity and performance. (Option to include physician screening form.)

**Onsite Health and Lifestyle Education** offered at your worksite to help employees achieve their health goals.

**Tobacco Cessation Interventions** are designed to reduce the risk of tobacco-related diseases. Digital coaching and onsite seminars are available to support these efforts.

**Digital Financial Well-Being** provides a digital health coaching solution to support health and financial decisions.

**Incentive Tracking & Tailored Communication Campaigns** display employer specific incentive programs to individual employees for easy access and progress tracking.

\*Pricing and participation minimums may apply.

**Get Started Today! For more information, contact [AHY@bluekc.com](mailto:AHY@bluekc.com).**