

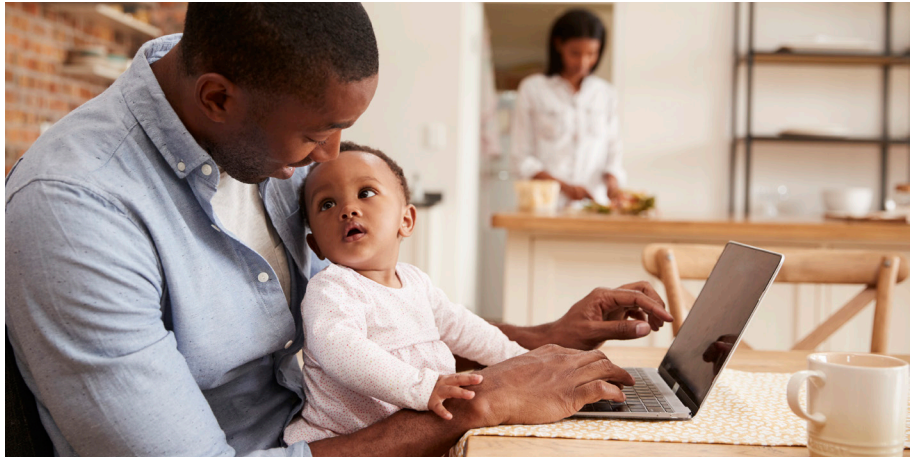


# FIND A DOCTOR OR HOSPITAL

## Estimate Your Medical Costs & Learn Ways to Save

The Blue KC **Doctor and Hospital Finder** with the built-in **Cost Estimator Tool** helps you make more informed decisions about your health.

- Narrow search using filters
- Estimate costs
- Find out networks a provider participates
- Learn about treatment options
- Understand treatment timelines
- Read and write provider reviews
- Compare providers
- Review doctor quality information



### START YOUR SEARCH

- Log into MyBlueKC.com, select **FIND CARE**, then select **FIND A DOCTOR OR HOSPITAL** to find the most up-to-date search results for doctors, hospitals or other healthcare providers in your network.

### Get more from your search



**Use categories to expand your search and feel more empowered with your healthcare decisions:**

**Search by Location** - Search by city or ZIP

**Search by Plan** - Your plan's network should display, but if it does not, you can find your network name at the top of your Blue KC member ID card

#### Search by Category

- **Name of doctor or specialty** - Search by first or last name, or a specialty, such as "general practice" or "OB/GYN"
- **Facility name or type of facility** - Enter the name of a hospital or clinic, or types of facilities near you and the support you might need



**Use categories to estimate your medical costs based on procedure or treatment type, plus ways to save!**

**Costs for procedures** - Get cost estimates for medical procedures, such as "MRI," "flu shot" or "eye exam"

**Treatment timelines** - Search treatment information for long-term medical conditions that include stages of healing, such as "total knee replacement" or "coronary bypass surgery"

**Condition information** - Search conditions such as "deviated septum" or "lumbar (low back pain)" and read medical information to find treatment options and doctors, which can provide insights into how you can lower your total costs and the support you might need

**Go to MyBlueKC.com to log in and search for doctors or hospitals, plus review costs and treatment timelines for over 1,600 healthcare services.**



# CHOOSE A DOCTOR WHO IS COMMITTED TO PROVIDING A BETTER EXPERIENCE

## FIND A TOTAL CARE DOCTOR IN YOUR NETWORK

Blue Distinction Total Care ("Total Care") by Blue KC is a network of doctors that provide a deeper focus on helping patients get healthy faster—and stay healthy longer.



### Benefits that Joe can experience with his Total Care doctor:

#### Receives coordinated, **QUALITY** care

Joe and his doctor work together to evaluate Joe's current health status and create a tailored plan that will help him better manage his health. Joe's medical history, health successes and challenges are collected and easily accessible by all of his doctors.

#### Feels connected

Joe can stay focused on his health with guidance and support from his doctor who:

- Reminds him to schedule preventive medical tests
- Coordinates follow-up care
- Connects with specialists in Joe's network
- Provides specialized care plans for Joe's conditions
- Is committed to providing quality and cost-effective care for Joe

#### Avoids unnecessary care

Because Joe's doctors are well connected and informed, they recommend tests and treatments that are evidence-based and appropriate. He gets the right care at the right time and place.

#### Gets healthy faster, stays healthy longer

With more proactive, more personalized healthcare, Joe is on the right path to getting healthy faster and staying healthy longer. As a result, he ultimately spends less time at the doctor and less money on things like prescriptions, procedures and emergency care.

### EXPERIENCE THE DIFFERENCE. FIND A TOTAL CARE PROVIDER

- Log into [MyBlueKC.com](https://mybluekc.com), select **FIND CARE**, then select **FIND A DOCTOR OR HOSPITAL**.
- Enter your search criteria.
- From your search results, use filters to narrow your results by provider gender, distance, specialty and/or languages spoken.
- Filter by **BDTC** to only see Total Care providers ("BDTC" is an abbreviation for Blue Distinction Total Care).

When you select a Total Care provider you receive quality, comprehensive care when and how you need it.